

Information for Viewers in Germany who use BFBS Technisat Receivers

BFBS is carrying out extensive upgrades to our satellite system as part of our contractual commitment to the MoD broadcasting contract, and a complete explanation of these changes is available at www.bfbs.com/rescan

These upgrades will mean that you will lose your BFBS TV channels at 1000 GMT on the 29th January, and

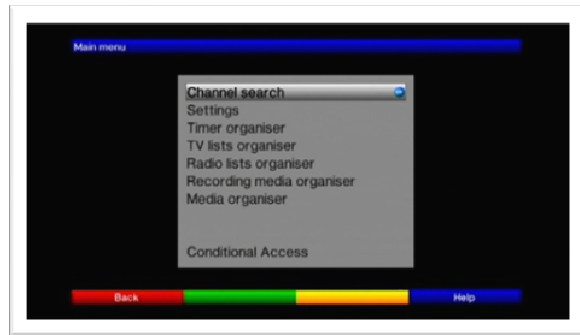
These upgrades will mean that you will lose your BFBS TV channels at 1000 GMT on the 29th January, and after this time (1100GMT approx) it will be necessary to rescan your BFBS satellite receiver to be able to continue to watch BFBS TV.

To rescan your BFBS Technisat Receiver please follow these instructions



Step 1. After the upgrade at 1000 GMT on the 29th January has happened you will see this **No Signal** screen

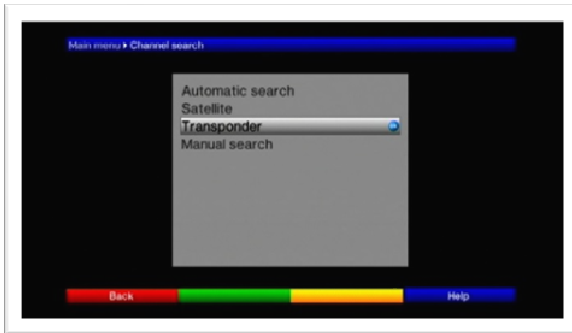
Press **MENU** on the BFBS Satellite Receiver remote control.



Step 2. You will then see this menu screen

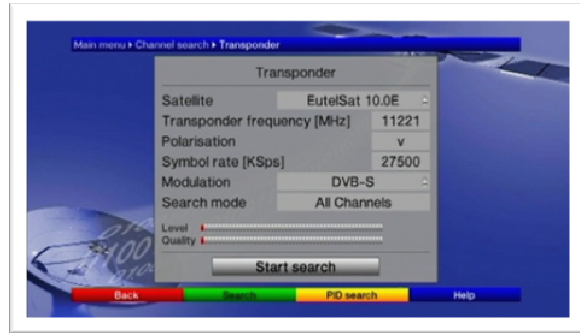
Press **OK** to select **Channel search**

Step 3. You will then see this menu screen



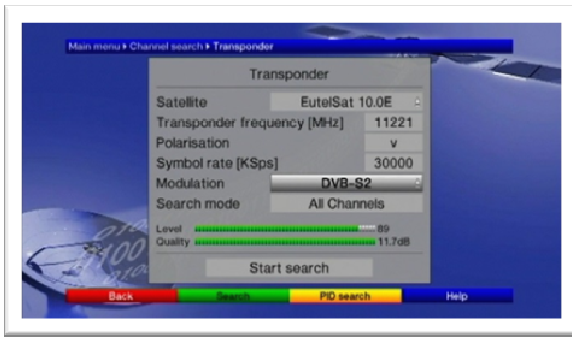
Press the down arrow until **Transponder** is highlighted and press **OK**

Step 4. You will then see this menu screen



- Press up/down arrow button until **Symbol rate (KSps)** is highlighted, it will show **27500**
- Change this value to **30000** using the numerical keypad. When you enter the last digit, the highlighted area will change automatically to **Modulation**
- With **Modulation** highlighted press **OK** and you will have the choice of **DVB-S** or **DVB-S2**
- Use the up or Down arrows to highlight **DVB-S2** and press **OK**

.....*Please Turn Over*



Step 5. You will then see this screen

Use the down arrow to highlight **Start search** and press **OK**, the satellite receiver will then rescan for the new satellite signal



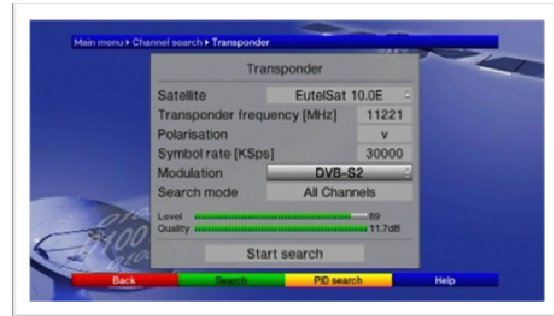
Step 6. After a few moments, you will then see this menu screen

Press **OK** to sort automatically (don't worry if the number of channels found is different from above)



Step 7. You will then see this menu screen

Press left button to highlight **Continue** then press **OK**



Step 8. You will now see this screen

Press **BACK** 3 times to exit through the menus back to the TV screen

You will now be watching BFBS TV

What TV Channels are available?

- | | |
|------------------------|----------------------|
| 1. BBC 1 | 11. not available |
| 2. BBC2 | 12. not available |
| 3. ITV | 13. not available |
| 4. BFBS Extra | 14. not available |
| 5. Sky Sports 1 | 15. not available |
| 6. Sky Sports 2 | 16. not available |
| 7. BFBS Sport | 17. not available |
| 8. Sky News | 18. Nepali TV |
| 9. no Channel | |
| 10. no Channel | |

If you require any further help or information regarding these changes:

- Please visit the BFBS website at www.bfbs.com/rescan
- Alternatively, you can call the BFBS Customer Helpline on +44 1494 878100 (Mon-Fri 06:00-20:00 UK Time, ex. Bank Holidays)