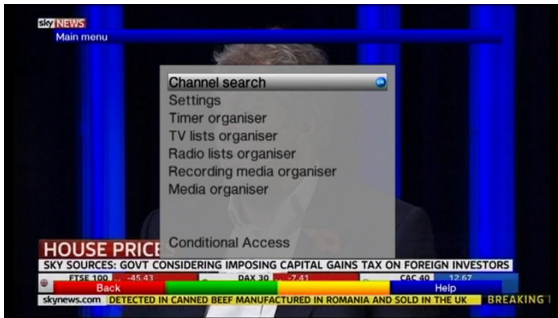


Information for Civilian Viewers in the Falkland Islands under the ‘SES 6 / NSS806’ Satellite with BFBS Technisat Receivers.

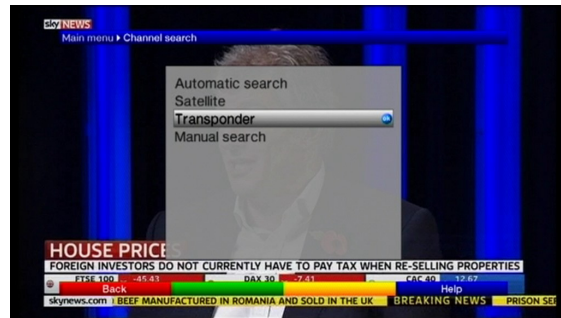
BFBS is carrying out extensive upgrades to our satellite system as part of our contractual commitment to the MoD broadcasting contract, and a complete explanation of these changes is available at www.bfbs.com/rescan

These upgrades will mean that you will lose your BFBS TV channels at 1000 GMT on the 29th January, and after this time (1100GMT approx) it will be necessary to rescan your BFBS satellite receiver to be able to continue to watch BFBS TV.

To rescan your BFBS Technisat Receiver please follow these instructions



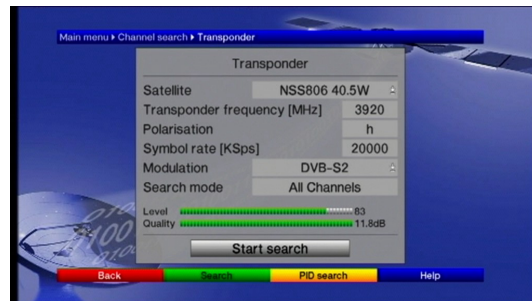
Step 1. Press **MENU** on the BFBS Satellite Receiver remote control, and then press **OK** to select **Channel search**



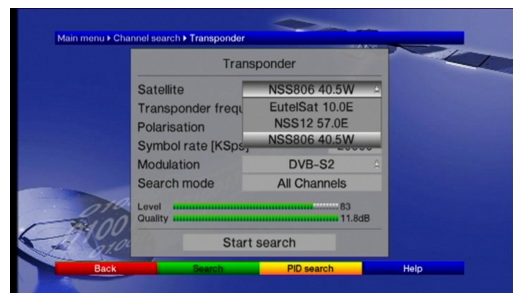
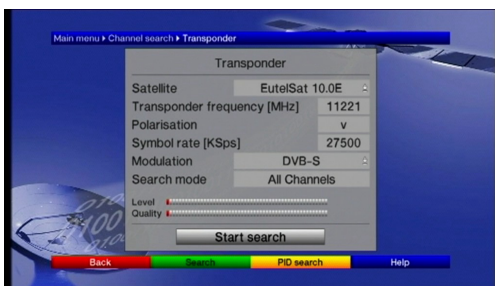
Step 2. You will then see this menu screen, press the down button until **Transponder** is highlighted and press **OK**

Step 3. You will then see a menu screen which will look like one of the screens below. Which screen will depend on whether you have been to this part of the MENU before whilst previously using the receiver

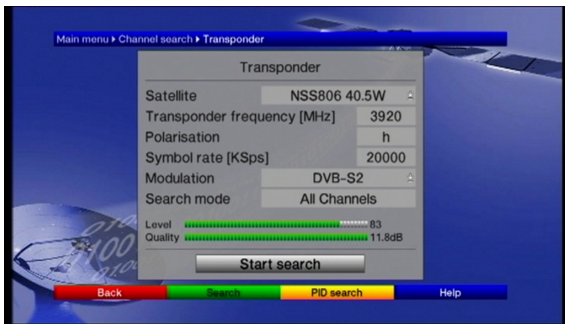
If your screen looks like this, with the **Satellite** set to **NSS806 40.5W**, then please skip onto **STEP 4**



If your screen looks like the picture on below on the left, with the **Satellite** set to **Eutelsat 10.0E**, press the up/down arrows to highlight **Eutelsat 10.0E** and then press **OK**, you will get the choice of **Eutelsat 10.0E**, **NSS12 57.0E** or **NSS806 40.5W** (as shown on the right hand picture), use the up/down arrows to highlight **NSS806 40.5W** and press **OK**

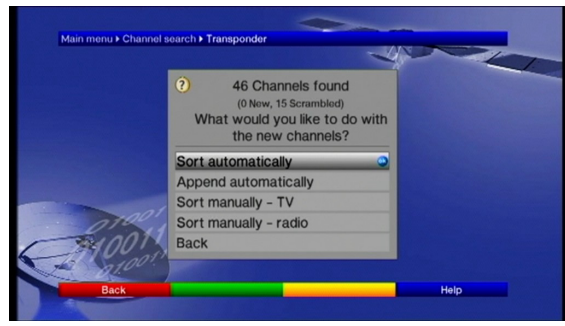


.....Please Turn Over

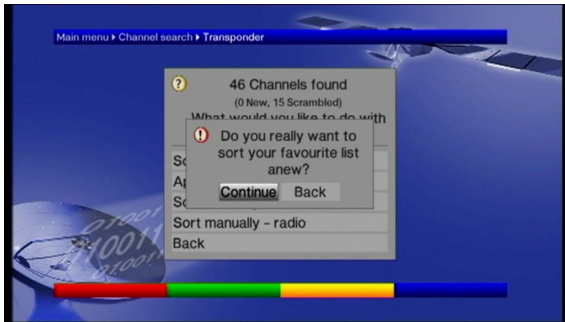


Step 4. With this screen displayed, press the down arrow to highlight **Start search** and press OK.

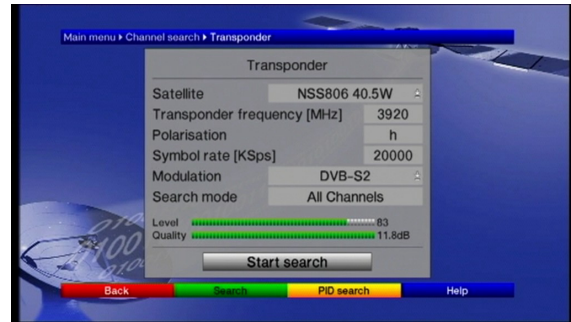
The satellite receiver will then rescan for the new BFBS services that are available



Step 5. You will then see this menu screen. Press **OK** to sort automatically (don't worry if the number of channels found is different from above)



Step 6. You will then see this screen. Press the left arrow to highlight **Continue** then press **OK**.



Step 7. You will now see this screen. Press **Back** 3 times to exit through the menus back to the TV screen.

You will now be watching BFBS TV

What TV Channels are available?

- | | |
|--------------------|---------------------------------|
| 1. not available | 11. BBC 1 – delayed |
| 2. not available | 12. BBC2 – delayed |
| 3. not available | 13. ITV – delayed |
| 4. not available | 14. BFBS Extra – delayed |
| 5. not available | 15. not available |
| 6. not available | 16. not available |
| 7. not available | 17. not available |
| 8. Sky News | 18. Nepali TV |
| 9. not available | |
| 10. not available | |

If you require any further help or information regarding these changes :

- Please visit the BFBS website at www.bfbs.com/rescan
- Alternatively, you can call the BFBS Customer Helpline on +44 1494 878100